

# Georgia Southern University

Division of Continuing Education  
Professional Learning Program  
Application for Professional Learning Unit Credit  
Prior Approval Form

Participant's Name: \_\_\_\_\_

Home Address: \_\_\_\_\_

School System: \_\_\_\_\_

Certification Type: \_\_\_\_\_ Position: \_\_\_\_\_

Date of Birth: \_\_\_\_\_

Name of Course: \_\_\_\_\_

### Check the categories for which this PLU credit applies:

- |  |  |
|--|--|
| <input type="checkbox"/> Field(s) of Certification   | <input type="checkbox"/> School/System/Individual Improvement Plan |
| <input type="checkbox"/> Annual Personnel Evaluation | <input type="checkbox"/> State/Federal Requirements                |

Description of Course: \_\_\_\_\_

Location of Course: \_\_\_\_\_

Dates of Course: \_\_\_\_\_

I hereby approve this person's participation in the above named Professional Learning Unit Credit Program. I further certify that the goals and objectives of this course are consistent with the goals and improvement objectives of this school system.

\_\_\_\_\_  
**System Superintendent or  
Professional Learning Coordinator**

\_\_\_\_\_  
**Date of Approval**

I'm not employed in a public or private school.

\_\_\_\_\_  
**Signature of Participant**

\_\_\_\_\_  
**Date of Approval**

**Please fax your completed form to the Division of Continuing Education at (912) 478-0847. This form must be received prior to the start date of your course.**

Georgia Southern University  
Statesboro, GA

**Each of OUR PLU-awarding courses is six weeks in length, with two lessons issued per week. One 2-week extension can be granted.**

**A final exam with a passing score of 70% will earn you PLU credit.**

### Courses start monthly:

January 18, 2012	July 18, 2012
February 15, 2012	August 15, 2012
March 21, 2012	September 19, 2012
April 18, 2012	October 17, 2012
May 16, 2012	November 14, 2012
June 20, 2012	December 12, 2012

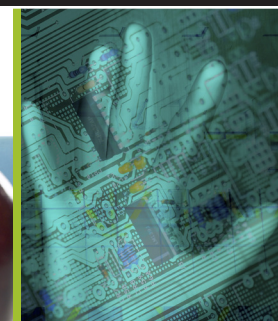
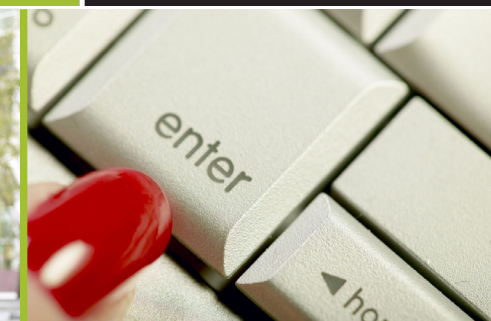
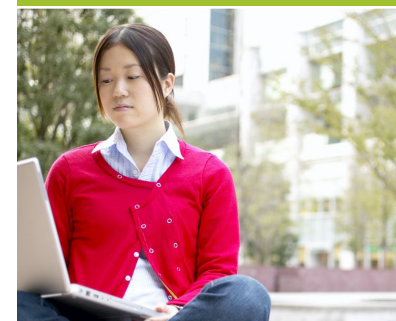


## Teacher Education Online Courses

Convenient, Affordable, and Effective  
Six weeks, two lessons per week

### Earn 2 PLU credits

[www.ed2go.com/gsu](http://www.ed2go.com/gsu)



Call 912.478.5551 or if you live outside our immediate area, call TOLL FREE 1.855.478.5551.  
Visit the website at <http://ceps.georgiasouthern.edu/conted> for additional face to face PLU training opportunities.

NON-PROFIT  
ORGANIZATION  
U.S. POSTAGE  
PAID  
STATESBORO  
GEORGIA  
PERMIT NO. 286

Continuing Education  
P. O. Box 8124  
Statesboro, Georgia 30460-8124



Every course on this page includes an expert instructor. All can be taken from the convenience of your home or office.

Take ed2go courses anywhere and when it's most convenient for you. We offer you hundreds of engaging online courses for adults.



**\$109**  
per course

# Teacher Education Online Course

## Six weeks, two lessons per week

### Earn 2 PLU credits per course

Visit [www.ed2go.com/gsu](http://www.ed2go.com/gsu) see all our courses!

- A to Z Grant Writing
- Achieving Success With Difficult People
- Advanced Microsoft Excel 2003 & 2007
- Advanced Microsoft Word 2003
- An Introduction to Teaching ESL/EFL
- Creating K-12 Learning Materials
- Creating a Classroom Website
- Creating Web Pages I
- Creating the Inclusive Classroom-Strategies for Success
- Designing Effective Websites
- Differentiated Instruction in the Classroom
- Differentiating K-12 Assessments
- Empowering Students with Disabilities
- Enhancing Language Development in Childhood
- Get Assertive!
- Grammar Refresher
- Guided Reading and Writing: Strategies for Maximum Student Achievement
- Guided Reading: Strategies for the Differentiated Classroom
- Guiding Kids on the Internet
- Homeschool with Success
- Instant Italian
- Integrating Technology in Classroom
- Introduction to Microsoft Access 2003
- Intermediate Microsoft Access 2003
- Introduction to Microsoft Access 2007
- Intermediate Microsoft Access 2007
- Introduction to Microsoft Excel 2003
- Intermediate Microsoft Excel 2003
- Introduction to Microsoft Excel 2007
- Intermediate Microsoft Excel 2007
- Introduction to Microsoft Word 2003
- Intermediate Microsoft Word 2003
- Introduction to Microsoft Word 2007
- Intermediate Microsoft Word 2007
- Introduction to Microsoft Word 2010
- Intermediate Microsoft Word 2010
- Introduction to Photoshop CS3, CS4, CS5
- Intermediate Photoshop CS3, CS4
- Introduction to Microsoft Outlook 2003

- Introduction to Microsoft Outlook 2007
- Introduction to Microsoft PowerPoint 2003
- Introduction to Microsoft PowerPoint 2007
- Keyboarding
- Keys to Effective Communication
- Leadership
- Microsoft Excel 2007 in the Classroom
- Microsoft Excel 2010 in the Classroom
- Microsoft PowerPoint 2007 in the Classroom
- Microsoft Word 2007 in the Classroom
- Photoshop Elements 8, 9 for the Digital Photographer
- Practical Ideas for the ESL/EFL Classroom
- Ready, Set, Read
- Response to Intervention: Reading Strategies That Work
- Singapore Math Strategies: Model Drawing for Grades 1-6
- Singapore Math Strategies: Number Sense and Computational Strategies
- Skills For Making Great Decisions
- Solving Classroom Discipline Problems
- Solving Classroom Discipline Problems II
- Speed Spanish
- Speed Spanish II
- Speed Spanish III
- Spanish in the Classroom
- Survival Kit for New Teachers
- Teaching Adult Learners
- Teaching ESL/EFL Grammar
- Teaching ESL/EFL Reading
- Teaching ESL/EFL Vocabulary
- Teaching Preschool: A Year of Inspiring Lessons
- Teaching Students with Autism: Strategies for Success
- Teaching Math Grades 4-6
- Teaching Science Grades 4-6
- Teaching Writing Grades 4-6
- Teaching Smarter with SMART Boards
- Teaching Students with ADHD
- Teaching Students with Autism: Strategies for Success
- The Classroom Computer
- The Creative Classroom
- The Differentiated Instruction and Response to Intervention Connection
- Understanding Adolescents
- Using the Internet in the Classroom
- Web 2.0: Blogs, Wikis and Podcasts
- Teaching Students with Learning Disabilities
- Writing for ESL
- Writing Essentials
- Writing for Children

All courses run for six weeks (with a two-week grace period at the end). Courses are project-oriented and include lessons, quizzes, hands-on assignments, discussion areas, supplementary links, and more. You can complete any of these courses entirely from your home or office and at any time of the day or night.

Each ed2go course comes equipped with a patient and caring instructor, lively discussions with your fellow students, and plenty of practical information that you can put to immediate use.

Each of OUR PLU-awarding courses is six weeks in length, with two lessons issued per week. One 2-week extension can be granted.

A final exam with a passing score of 70% will earn you PLU credit.

Courses start monthly:

- |                   |                    |
|-------------------|--------------------|
| January 18, 2012  | July 18, 2012      |
| February 15, 2012 | August 15, 2012    |
| March 21, 2012    | September 19, 2012 |
| April 18, 2012    | October 17, 2012   |
| May 16, 2012      | November 14, 2012  |
| June 20, 2012     | December 12, 2012  |

To receive PLUs, you must complete and submit the Prior Approval Form before registering for any class. Find the Prior Approval Form on the back page of this flyer.

#### HOW TO GET STARTED

1. Visit our Online Instruction Center: [www.ed2go.com/gsu](http://www.ed2go.com/gsu)
2. Click the Course link, once you choose the department and course title you are interested in, select the Enroll Now button. Follow the instructions. Here you will choose a user name and password that will grant you access to the Classroom.
3. When your course starts...return to the Online Instruction Center and click the Classroom link. To begin your studies, simply log in with the username and password you selected during enrollment.

#### COMPUTER REQUIREMENTS:

All courses require internet access and e-mail. Some courses have additional requirements.



#### HOW TO REGISTER

- By Phone : Call 912.478.5551 or TOLL FREE 1.855.478.5551 and use a credit card
- By Mail : Complete this form and send to  
Continuing Education, Registrations, Georgia Southern University, PO Box 8124, Statesboro, GA 30460-8124
- By Fax : Complete form, copy as needed, and send with your credit card number to 912.478.0847
- In Person: Come to the Registration area in the Nessmith-Lane Conference Center, 8 am -5 pm, Monday - Friday
- Online <http://ceps.georgiasouthern.edu/conted>

#### PAYMENT

We accept MasterCard, VISA, checks, money orders or cash (in person only)  
Make checks payable to: Georgia Southern University

#### REFUND POLICY

Refunds due to withdrawals take 2-4 weeks. If payment is made by credit card, your account will be credited.

A \$5 processing fee is charged for all withdrawals received less than two weeks prior to the beginning of a program.

No refunds are given to registrants who fail to withdraw prior to the beginning of the program.

#### REGISTER FOR Ed2Go Courses

PLEASE INDICATE COURSE TITLE(S) \_\_\_\_\_

\_\_\_\_\_

\_\_\_\_\_

First Name \_\_\_\_\_ Middle Initial \_\_\_\_\_

Last Name \_\_\_\_\_

Title (if applicable) \_\_\_\_\_

Address  Home  Work \_\_\_\_\_

\_\_\_\_\_

\_\_\_\_\_

City \_\_\_\_\_

State \_\_\_\_\_ Zip Code \_\_\_\_\_

Daytime Phone \_\_\_\_\_

Evening Phone \_\_\_\_\_

FAX Number \_\_\_\_\_

E-mail Address \_\_\_\_\_

Please exclude me from eblast mailings

#### PAYMENT METHOD

Personal check (payable to Georgia Southern University)

Company check

Cash (in person only)

VISA

personal

corporate

Mastercard

personal

corporate

Account Number \_\_\_\_\_ V-Code \_\_\_\_\_  
Expiration Date \_\_\_\_\_

Cardholder's Name \_\_\_\_\_

Look for instructor feedback and ask questions in the **Discussion Areas** of each course!

Questions: Contact Judy Hendrix-Poole, Continuing Education Center, Georgia Southern University, Phone: 912-478-5993, Email: [jhendrix@georgiasouthern.edu](mailto:jhendrix@georgiasouthern.edu)

For a full listing of PLU courses, visit our website at <http://ceps.georgiasouthern.edu/conted>